

RED

GREEN

BLUE

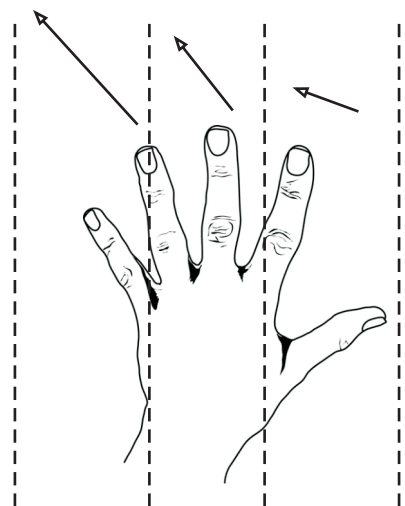
CYAN

00.00
 00.22
 01.00 (+)
 01.24
 02.17
 03.08
 03.59 (-)
 04.50
 05.33
 06.09
 06.50
 07.11
 08.08 (+)
 08.57
 09.44 (-)
 10.39
 11.34
 11.45
 12.09
 12.49
 13.04 (+) (+)
 14.03 (+) (+)

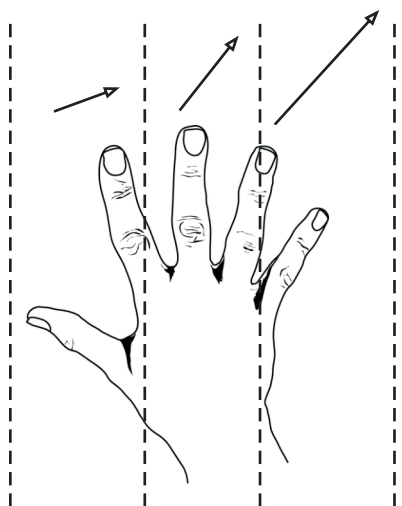
00.00
 00.18
 00.40
 01.30
 01.58
 02.19
 02.43
 03.22 (-)
 03.55
 04.15
 04.50
 05.43
 06.10
 06.48
 07.23
 08.10 (+)
 08.49 (+)
 09.40
 10.03
 10.23
 10.43
 11.22
 11.53
 12.40
 13.16
 13.38 (+)
 14.15
 14.36 (+)

00.00
 00.57
 01.50 (+)
 02.45
 03.06
 03.55
 04.30
 05.04
 05.37
 06.22
 07.11
 07.29
 07.51 (+)
 08.28
 08.42
 09.25
 10.08 (-)
 11.03 (-)
 11.50
 12.40
 13.04
 13.16
 13.28
 13.40
 13.55 (+)
 14.31
 14.42
 14.54

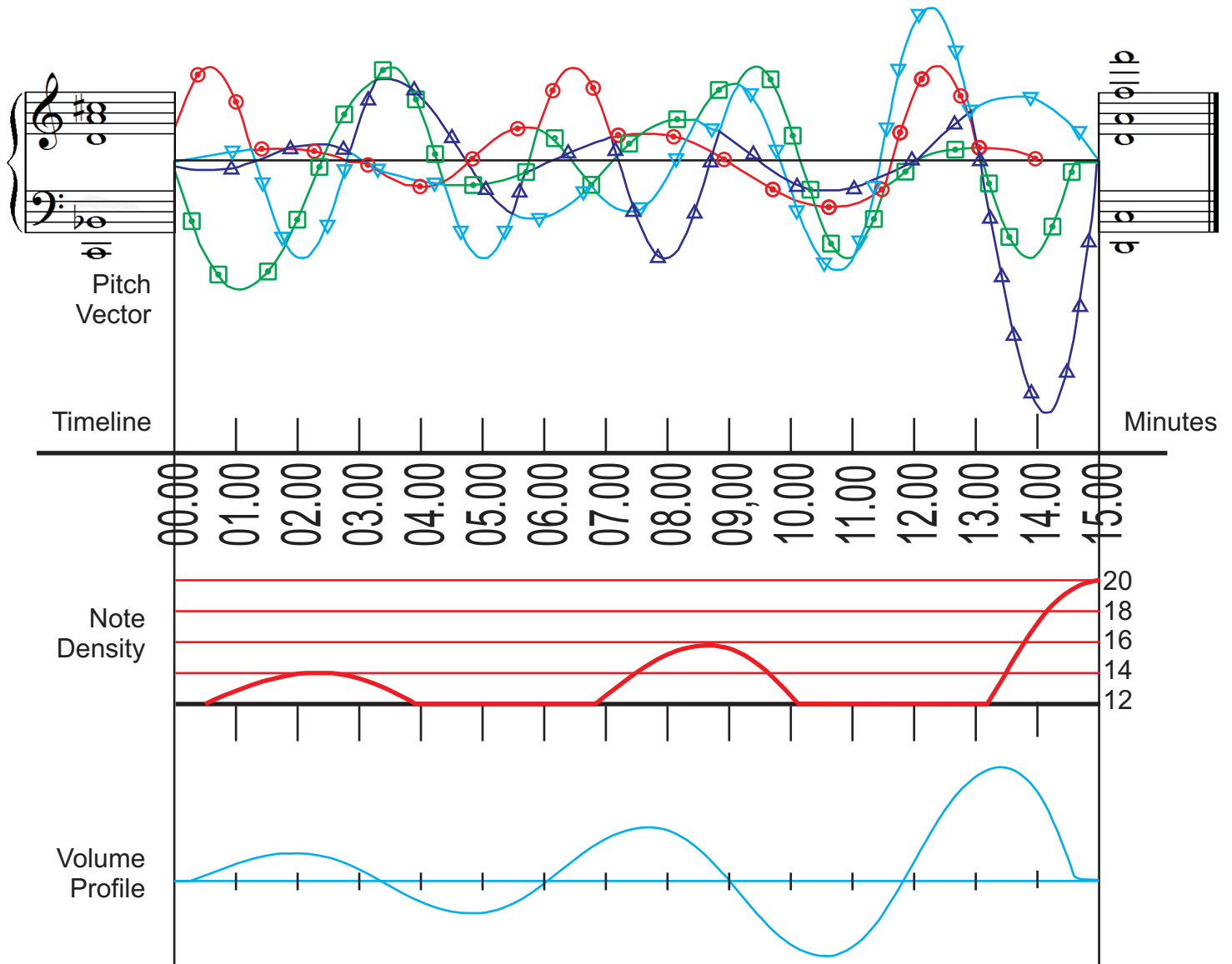
00.00
 00.55
 01.26
 01.46
 02.29
 02.48
 03.22
 04.15
 04.40
 05.22
 05.55
 06.40
 07.27
 08.08
 08.45
 09.23
 09.48
 10.08
 10.35 (-)
 11.11
 11.24
 11.34
 11.48
 12.05
 12.41 (+)
 12.55 (+)
 13.55
 14.42



(+) Add note
 (-) Subtract note



For Audience and 4 keyboards



Equipment



Four keyboards capable of continuous notes (i.e. organs)

Timepieces minutes and seconds

Keyboards positioned for easy access by audience members

A mixer/sound system with effects operated by "sound Sculptors"



A means of holding and releasing the keys on the keyboards such as weights or tapes

Method

The audience divides into four groups RED, GREEN, BLUE, CYAN and each is assigned a keyboard. At a given signal everyone starts their timepieces.

At indicated times a group member walks to the keyboard and carries out the instruction. This will be to increase or decrease the pitch on any pressed key by releasing it and selecting another note. The interval size is indicated on the instructions by a small, medium or large arrow along with its direction. All intervals fall within a span of a hand.

Occasionally instructions will also include adding or subtracting notes.

One or two "Sound Sculptors" will apply effects and obey the volume profile as the piece is played. They will also be responsible for the starting and finishing chords as indicated.